

1 Block A - Cork Street Elevation NW  
1 : 100



2 Block A - Chamber Street Elevation SE  
1 : 100

**Keynote Legend**

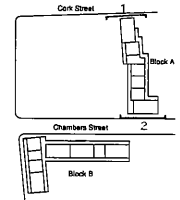
- 1 High quality (our faced) brickwork, light red with varied hues to match image (1), laid in a stretcher bond. Light coloured mortar to suit brick, weathersuck.
- 2 Concrete coping to match light red brickwork. Maximum 75mm depth.
- 4 Recessed brick panel over opening to match light red brickwork, laid in a stretcher bond. Light coloured mortar to suit brick, weathersuck. Minimum 50mm set back from main building face.
- 5 Recessed brick detail minimum two courses to match main brickwork, minimum recess 25mm.
- 6 Recessed brick detail around openings in brick to match main facade, min recess 50mm from front face of building.
- 7 PPC Aluminium canopy with secret fixings, RAL7033 Matt, to match window frames.
- 9 PPC Aluminium frame glazed door and side panel, RAL7033 Matt, to match window frames.
- 12 PPC aluminium signage panel with acid etched lettering, to match RAL7033 Matt.
- 20 50x10mm asept fixa bakelite PPC, RAL7033 Matt, to match window frames.
- 25 Aluminium clad window system maximum 100mm width in elevation at any point, PPC RAL7033 Matt.
- 27 PPC aluminium rainwater downpipe colour and finish to match windows, RAL7033 Matt, with hopper to match.

**Notes**

1. Do not scale this drawing.
2. All dimensions must be checked on site and any discrepancies verified with the architect.
3. Unless shown otherwise, all dimensions are to structural surfaces.
4. Drawing to be read with all other issued information. Any discrepancies to be brought to the attention of the architect.
5. This drawing is the copyright of Levitt Barnstein and may not be copied, altered or reproduced in any form, or passed to a third party without license or written consent.

All extracts from digital ordnance survey, Copyright:  
© Sunbabeach, Ordnance Survey  
© Ordnance Survey Ireland  
Under licence number AR 0043118

This is not a construction drawing, it is unsuitable for the purpose of construction and must on no account be used as such.



T2	14/12/18	FAÇADE AMENDMENTS	CG
T1	01/11/18	FOR TENDER	CG
Rev	Date	Description	Initial

Project name

**Cork Street**  
Proposed Apartment Blocks

Drawing number	Rev
35198 - LB - CC - XX - DR - A - 3100	T2

Drawing  
**Block A - Cork Street Elevation NW and Chamber Street Elevation SE**

Prepared by	Date
For Tender	09/13/18

Scale	Drawn
As indicated @ A1	CG

Client	Checked
Dublin City Council	SL

**Levitt Barnstein**  
levittbarnstein.co.uk  
London  
Thames Quay  
25 The Mills  
London SE7 7PA  
+44 (0)20 725 7818  
**Manchester**  
Broad Warehouse  
Oldham Street  
Manchester M2 3JE  
+44 (0)161 268 8760

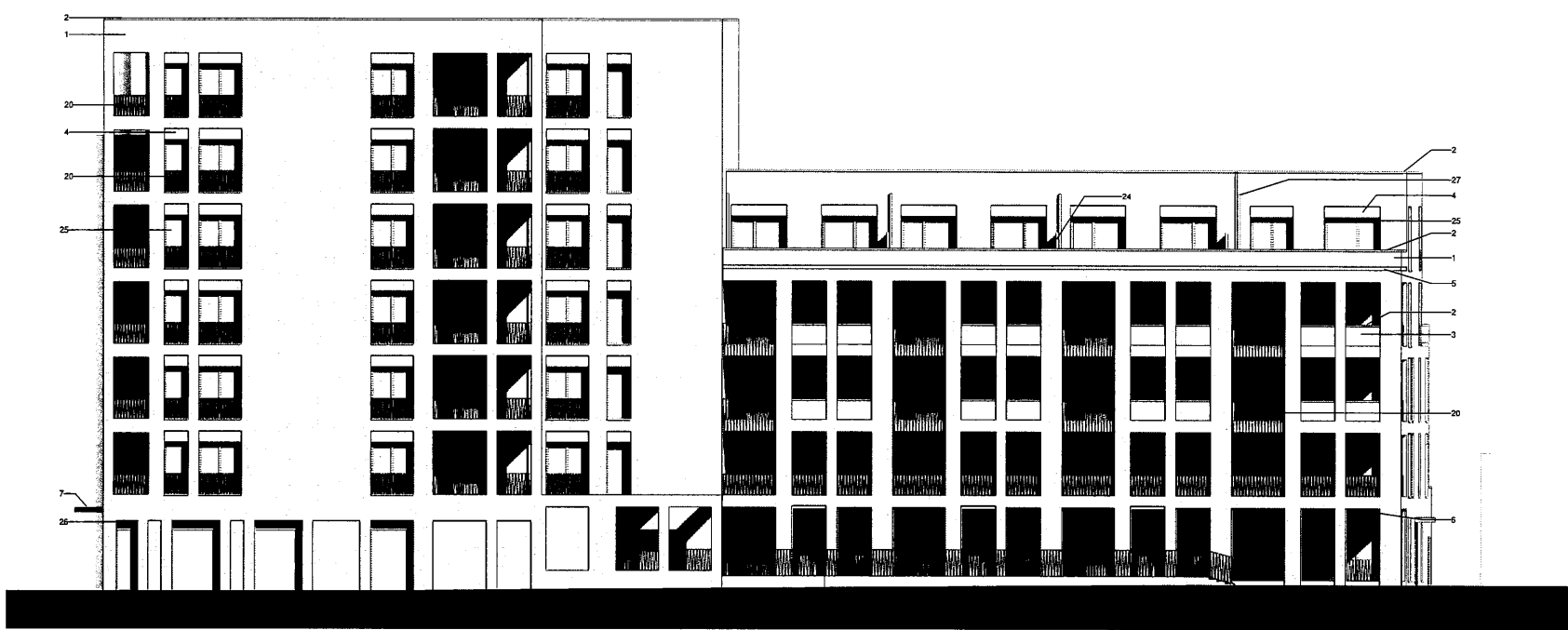
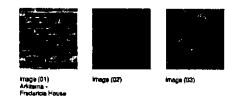
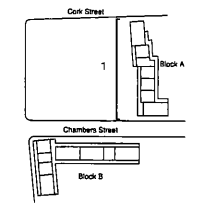
**abk**  
abk@idublin.com  
Dublin  
34 Lower Leeson Street  
Dublin 2  
+353 1 478 9822

**Notes**

1. Do not scale this drawing.
2. All dimensions must be checked on site and any discrepancies verified with the architect.
3. Unless shown otherwise, all dimensions are to structural surfaces.
4. Drawing to be read with all other issued information. Any discrepancies to be brought to the attention of the architect.
5. This drawing is the copyright of Lavis Barnstain and may not be copied, altered or reproduced in any form, or passed to a third party without license or written consent.

All extracts from digital Ordnance Survey. Copyright:  
 © Sunbearthack Ordnance Survey  
 © Ordnance Survey Ireland  
 Under licence number AR 0043118

This is not a construction drawing, it is unsuitable for the purpose of construction and must on no account be used as such.



**1 Block A - Weaver Park Elevation SW**  
 1 : 100

**Keynote Legend**

- 1 High quality four faced brickwork, light red with varied hues to match image (1), laid in a stretcher bond. Light coloured mortar to suit brick, weatherstruck.
- 2 Concrete coping to match light red brickwork. Maximum 75mm depth.
- 3 Recessed brick panels to match light red brickwork, laid in a stretcher bond. Light coloured mortar to suit brick, flush struck. Minimum 50mm set back from main face of building.
- 4 Recessed brick panel over opening to match light red brickwork, laid in a stretcher bond. Light coloured mortar to suit brick, weatherstruck. Minimum 50mm set back from main building face.
- 5 Recessed brick detail minimum two courses to match main brickwork, minimum recess 25mm.
- 6 Recessed brick detail around openings in brick to match main facade, min recess 50mm from front face of building.
- 7 PPC Aluminium canopy with secret fixings, RAL7033 Matt, to match window frames.
- 20 50x10mm steel fins substrate PPC, RAL7033 Matt, to match window frames.
- 24 Perforated aluminium privacy panels, RAL7033 Matt, to match window frames.
- 25 Aluminium clad window system maximum 100mm width in elevation at any point, PPC RAL7033 Matt.
- 26 Cais ventilation louvres integrated with aluminium clad window system, PPC RAL7033 Matt.
- 27 PPC aluminium rainwater downpipe colour and finish to match windows, RAL7033 Matt, with hopper to match.

Rev	Date	Description	Initials
T2	14/12/18	FAÇADE AMENDMENTS	CG
T1	01/11/18	FOR TENDER	CG

Project name

**Cork Street**  
 Proposed Apartment Blocks

Drawing number	Rev
35199 - LB - CC - XX - DR - A - 3101	T2

Drawing

**Block A - Weaver Park Elevation SW**

Purpose of Issue	Date
For Tender	08/13/18

Scale	Drawn
As indicated @ A1	CG
Client	Checked
Dublin City Council	SL

**Lavis Barnstain**  
 lavis@lavis.co.uk

**London**  
 Three Dulux  
 24 Three Mills  
 London W7 7PQ  
 +44 (0)20 725 9779

**Manchester**  
 Bonded Warehouse  
 Oliver Street  
 Manchester M14 6JL  
 +44 (0)161 3442 9740

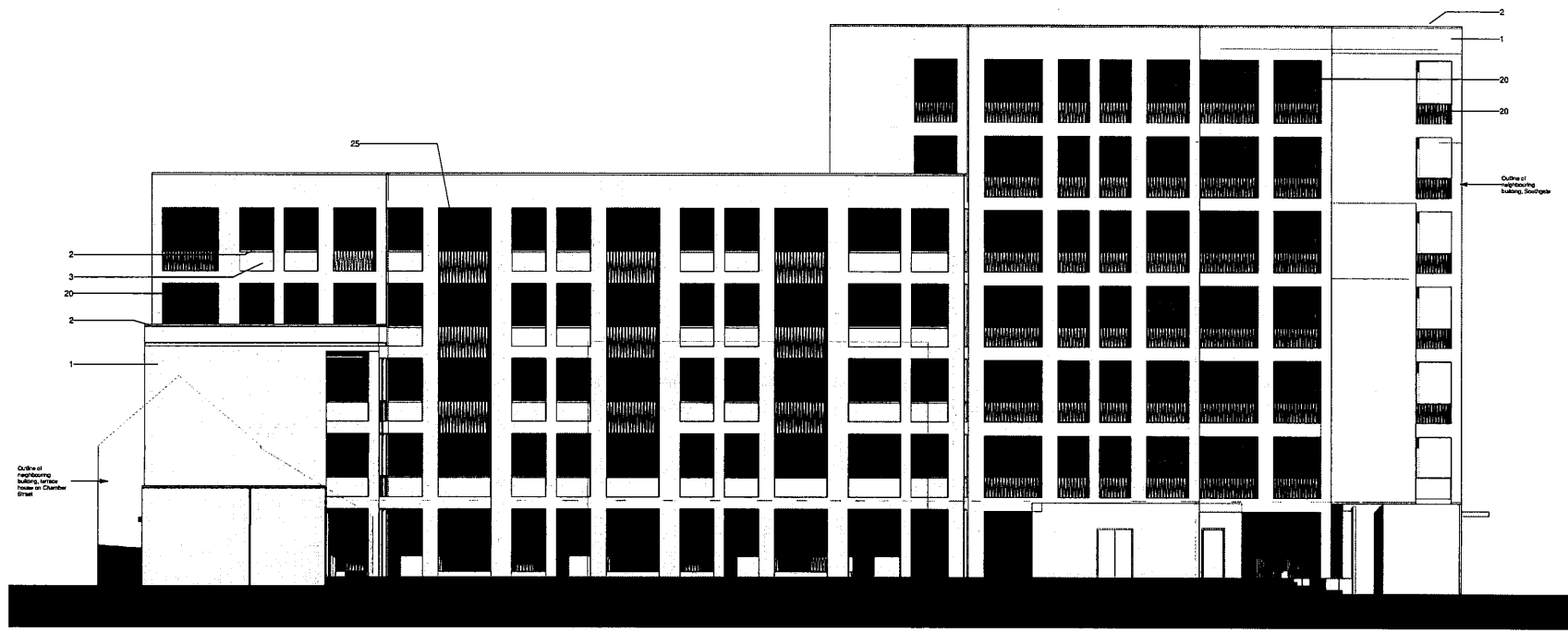
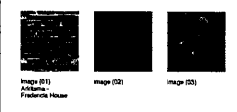
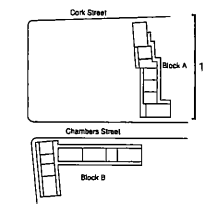
**Dublin**  
 34 Lower Leeson Street  
 Dublin 2  
 +353 1 478 2822

**Notes**

1. Do not scale this drawing.
2. All dimensions must be checked on site and any discrepancies verified with the architect.
3. Unless shown otherwise, all dimensions are to structural surfaces.
4. Drawing to be read with all other issued information. Any discrepancies to be brought to the attention of the architect.
5. This drawing is the copyright of Levitt Bernstein and may not be copied, altered or reproduced in any form, or passed to a third party without license or written consent.

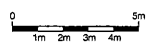
All extracts from digital ordnance survey. Copyright: © Surbhraj Singh, Ordnance Etrason © Ordnance Survey Ireland Under licence number AR 0043118

This is not a construction drawing, it is unsuitable for the purpose of construction and must on no account be used as such.



**1 Block A - Courtyard Elevation NE**  
1 : 100

- Keynote Legend**
- 1 High quality four faced brickwork, light red with varied hues to match Image (1), laid in a stretcher bond. Light coloured mortar to suit brick, weatherstruck.
  - 2 Concrete coping to match light red brickwork. Maximum 75mm depth.
  - 3 Recessed brick panels to match light red brickwork, laid in a stretcher bond. Light coloured mortar to suit brick, flush struck. Minimum 50mm set back from main face of building.
  - 20 50x100mm steel filigree balustrade PPC, RAL7033 Matt, to match window frames.
  - 25 Aluminium clad window system maximum 100mm width in elevation at any point, PPC RAL7033 Matt.



T2 14/12/18 FACADE AMENDMENTS CG  
T1 01/11/18 FOR TENDER CG

Rev	Date	Description	Issued

Project name  
**Cork Street**  
Proposed Apartment Blocks

Drawing number	Rev
35199 - LB - CC - XX - DR - A - 3102	T2

Drawing  
**Block A - Courtyard Elevation NE**

Purpose of Issue	Date
For Tender	08/13/18

Scale  
As Indicated @ A1

Client  
Dublin City Council

Levitt Bernstein  
levittberstein.co.uk

London  
24 The Quadrant  
London W1 7TA  
+44 (0)20 7251 7474

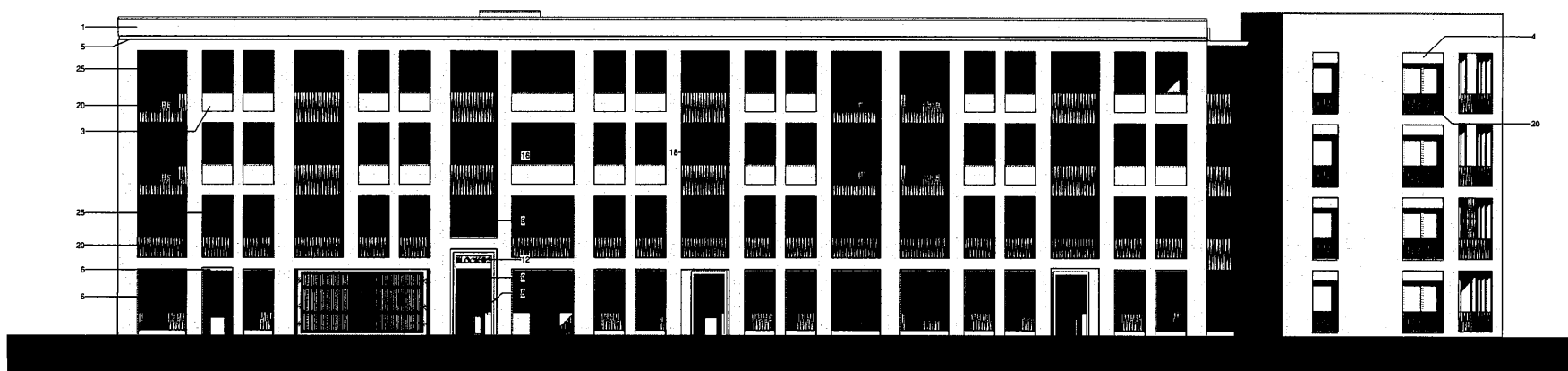
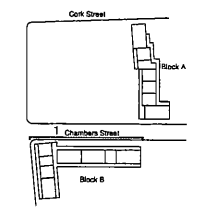
Manchester  
Bancroft Warehouse  
Oldham Street  
Manchester M4 3JF  
+44 (0)161 274 8700

abkdublin.com  
Dublin  
34 Lower Leeson Street  
Dublin 2  
D02 N1 2P  
+353 1 79 9877

- Notes**
1. Do not scale this drawing.
  2. All dimensions must be checked on site and any discrepancies verified with the architect.
  3. Unless shown otherwise, all dimensions are to structural surfaces.
  4. Drawing to be read with all other issued information. Any discrepancies to be brought to the attention of the architect.
  5. This drawing is the copyright of Levitt Bernstein and may not be copied, altered or reproduced in any form, or passed to a third party without license or written consent.

All extracts from digital ordnance survey. Copyright:  
 © Ordnance Survey  
 © Ordnance Survey Ireland  
 Under licence number AR 0043118

This is not a construction drawing, it is unsuitable for the purpose of construction and must not be used as such.



1 Block B - Chamber Street Elevation NW  
 1 : 100

T2	14/12/18	FAÇADE AMENDMENTS	CG
T1	01/11/18	FOR TENDER	CG
Rev	Date	Description	Initia

Project name

**Cork Street**  
 Proposed Apartment Blocks

Drawing Number	Rev
35199 - LB - CC - XX - DR - A - 3104	T2

Design  
**Block B - Chamber Street Elevation NW**

Purpose of issue	Date
For Tender	09/13/18

Scale	Drawn
As indicated @ A1	CG

Client	Checked
Dublin City Council	SL

**Levitt Bernstein**  
 levittbernstein.co.uk

**London**  
 2nd Floor  
 100 Abchurch Lane  
 London EC4N 3DF  
 +44 (0)20 7776 7000

**Dublin**  
 54 Lower Leeson Street  
 Dublin 2  
 +353 1 476 9822

**Manchester**  
 10th Floor  
 100 Market Street  
 Manchester M2 1PL  
 +44 (0)161 838 8140

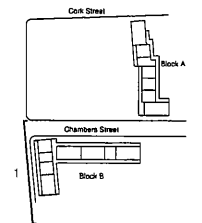
- Keynote Legend**
- 1 High quality four faced brickwork, light red with varied hues to match image (1), laid in a stretcher bond. Light coloured mortar to suit brick, weatherstruck.
  - 2 Recessed brick panels to match light red brickwork, laid in a stretcher bond. Light coloured mortar to suit brick, flush struck. Minimum 50mm set back from main face of building.
  - 3 Recessed brick panel over opening to match light red brickwork, laid in a stretcher bond. Light coloured mortar to suit brick, weatherstruck. Minimum 50mm set back from main building face.
  - 4 Recessed brick detail minimum two courses to match main brickwork, minimum recess 25mm.
  - 5 Recessed brick detail around openings in brick to match main facade, min recess 50mm from front face of building.
  - 6 Fob access control panel, anodised aluminium
  - 7 PPC Aluminium frame glazed door and side panel, RAL7033 Matt, to match window frames.
  - 8 PPC aluminium signage panel with acid etched lettering, to match RAL7033 Matt.
  - 9 Composite insulated timber entrance door, factory finished to match RAL7033 Matt, with viewing panel over. High quality stainless steel door furniture and fittings.
  - 10 50x100mm steel flat balustrade PPC, RAL7033 Matt, to match window frames.
  - 11 250x100mm aluminium clad window system maximum 100mm width in elevation at any point, PPC RAL7033 Matt.

**Notes**

1. Do not scale this drawing.
2. All dimensions must be checked on site and any discrepancies verified with the architect.
3. Unless shown otherwise, all dimensions are to structural surfaces.
4. Drawing to be read with all other issued information. Any discrepancies to be brought to the attention of the architect.
5. This drawing is the copyright of Levitt Bernstein and may not be copied, altered or reproduced in any form, or passed to a third party without license or written consent.

All extracts from digital ordnance survey. Copyright:  
 © Dunfermoch Ordnance Eireann  
 © Ordnance Survey Ireland  
 Under licence number AR 0042118

This is not a construction drawing, it is unsuitable for the purpose of construction and must on no account be used as such.



**1 Block B - Weavers Square Elevation SW**  
 1 : 100

**Keynote Legend**

- 1 High quality four faced brickwork, light red with varied hues to match image (1), laid in a stretcher bond. Light coloured mortar to suit brick, weatherstruck.
- 4 Recessed brick panel over opening to match light red brickwork, laid in a stretcher bond. Light coloured mortar to suit brick, weatherstruck. Minimum 50mm set back from main building face.
- 8 Fob access control panel, anodised aluminium
- 9 PPC Aluminium frame glazed door and side panel, RAL7033 Matt, to match window frames.
- 12 PPC aluminium signage panel with acid etched lettering, to match RAL7033 Matt.
- 20 50x10mm steel flat balustrade PPC, RAL7033 Matt, to match window frames.
- 25 Aluminium clad window system maximum 100mm width in elevation at any point, PPC RAL7033 Matt.

Rev	Date	Description	Initials
T2	14/12/18	FACADE AMENDMENTS	CG
T1	01/11/18	FOR TENDER	CG

Project name

**Cork Street**  
 Proposed Apartment Blocks

Drawing number

35198 - LB - CD - XX - DR - A - 3105

Drawing  
**Block B - Weavers Square Elevation SW**

Purpose of issue  
 For Tender

Date  
 09/13/18

Scale  
 As indicated @ A1

Client  
 Dublin City Council

Checked  
 SL

**Levitt Bernstein**  
 levitt@bernstein.co.uk

**Landon**  
 Trans Dublin  
 24 The Vines  
 London W7 7PA  
 +44 (0)20 775 7818

**Mancheater**  
 Bonded Warehouse  
 One Storey  
 Manchester M12 3LB  
 +44 (0)161 1462 8740

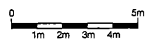
**abkdublin.com**  
 Dublin  
 34 Lower Linnell Street  
 Dublin 2  
 +353 1 678 9622



1 Block B - Courtyard Elevation SE  
1:100

**Keynote Legend**

- 1 High quality four faced brickwork, light red with varied hues to match image (1), laid in a stretcher bond. Light coloured mortar to suit brick, weatherstruck.
- 4 Recessed brick panel over opening to match light red brickwork, laid in a stretcher bond. Light coloured mortar to suit brick, weatherstruck. Minimum 50mm set back from main building face.
- 7 PPC Aluminium canopy with secret fixings, RAL7033 Matt, to match window frames.
- 8 Fob access control panel, anodised aluminium
- 9 PPC Aluminium frame glazed door and side panel, RAL7033 Matt, to match window frames.
- 20 50x10mm steel flat balustrade PPC, RAL7033 Matt, to match window frames.
- 26 Café ventilation louvres integrated with aluminium clad window system, PPC RAL7033 Matt.



**Notes**

1. Do not scale this drawing.
2. All dimensions must be checked on site and any discrepancies verified with the architect.
3. Unless shown otherwise, all dimensions are to structural surfaces.
4. Drawing to be read with all other issued information. Any discrepancies to be brought to the attention of the architect.
5. This drawing is the copyright of Levitt Bernstein and may not be copied, altered or reproduced in any form, or passed to a third party without license or written consent.

All extracts from digital ordnance survey. Copyright:  
© Súrthreacht Órdnáis Éireann  
© Ordnance Survey Ireland  
Under licence number AR 0043118

This is not a construction drawing, it is unsuitable for the purpose of construction and must on no account be used as such.

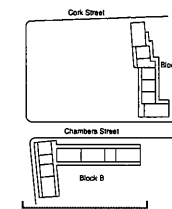


Image (1)  
Arkema  
Firestone House

T2	14/12/18	FAÇADE AMENDMENTS	CG
T1	01/11/18	FOR TENDER	CG
Rev	Date	Description	Initia

Project name

**Cork Street**  
Proposed Apartment Blocks

Drawing number	Rev
----------------	-----

35198 - LB - CC - XX - DR - A - 3106 T2

Drawing

**Block B - Courtyard Elevation SE**

Purpose of issue	Date
------------------	------

For Tender 09/13/18

Scale	Drawn
-------	-------

As indicated @ A1 CG

Client	Checked
--------	---------

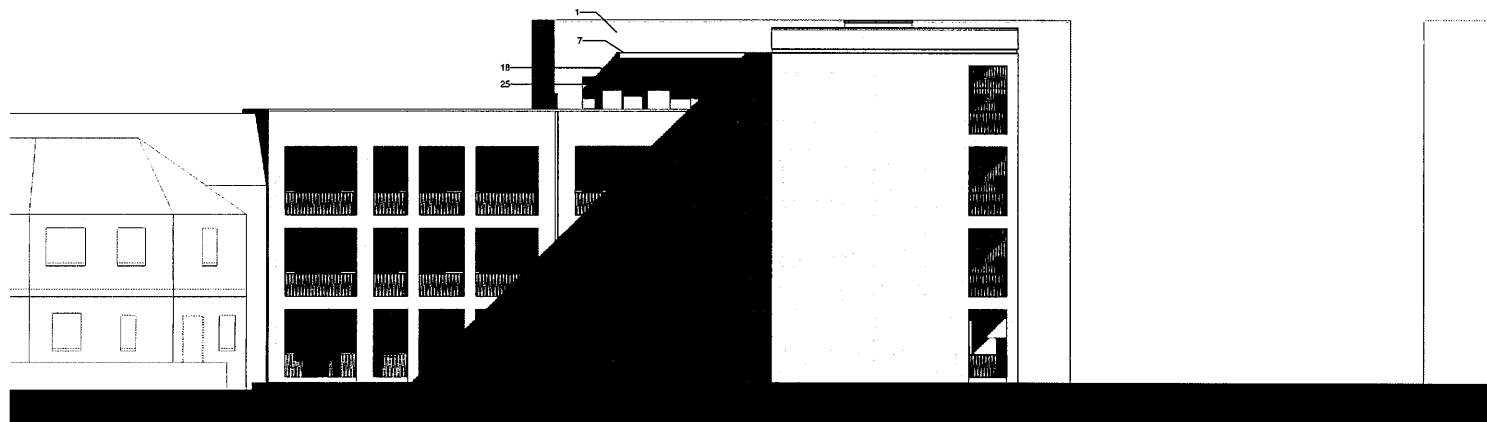
Dublin City Council SL

**Levitt Bernstein**  
levittberstein.co.uk

London  
Thames Valley  
2nd Floor  
London W7 7TA  
+44 (0)20 7275 7818

Manchester  
Brookfield Warehouse  
Oxford Street  
Manchester M6 3JE  
+44 (0)161 868 8140

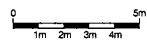
**ABP**  
abkdublin.com  
Dublin  
24 Lower Leman Street  
Dublin 2  
+353 1 678 9822



**1 Block B - Courtyard Elevation NE**  
1 : 100

**Keynote Legend**

- 1 High quality four faced brickwork, light red with varied hues to match image (1), laid in a stretcher bond. Light coloured mortar to suit brick, weatherstruck.
- 7 PPC Aluminium canopy with sacrel fixings, RAL7033 Matt, to match window frames.
- 18 Composite insulated timber entrance door, factory finished to match RAL7033 Matt, with viewing panel over. High quality stainless steel door furniture and fittings.
- 25 Aluminium clad window system maximum 100mm width in elevation at any point, PPC RAL7033 Matt.



**Notes**

1. Do not scale this drawing.
2. All dimensions must be checked on site and any discrepancies verified with the architect.
3. Unless shown otherwise, all dimensions are to structural surfaces.
4. Drawing to be read with all other issued information. Any discrepancies to be brought to the attention of the architect.
5. This drawing is the copyright of Lavitt Barnstein and may not be copied, altered or reproduced in any form, or passed to a third party without license or written consent.

All extracts from digital ordinance survey, Copyright:  
© Corbhairbhach Ordnála Eireann  
© Ordnance Survey Ireland  
Under licence number AR 0043118

This is not a construction drawing, it is unsuitable for the purpose of construction and must on no account be used as such.

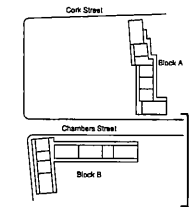


Image (1) Akame Production House  
Image (2)  
Image (3)

Rev	Date	Description	Initials
T2	14/12/18	FACADE AMENDMENTS	CG
T1	01/11/18	FOR TENDER	CG

Project name

**Cork Street  
Proposed Apartment Blocks**

Drawing number Rev

3519B - LB - CC - XX - DR - A - 3107 T2

Drawing

**Block B - Courtyard Elevation NE**

Purpose of issue Date

For Tender 09/13/18

Scale Drawn

As Indicated @ A1 CG

Client Checked

Dublin City Council SL

**Lavitt Barnstein**  
lavittbarnstein.co.uk

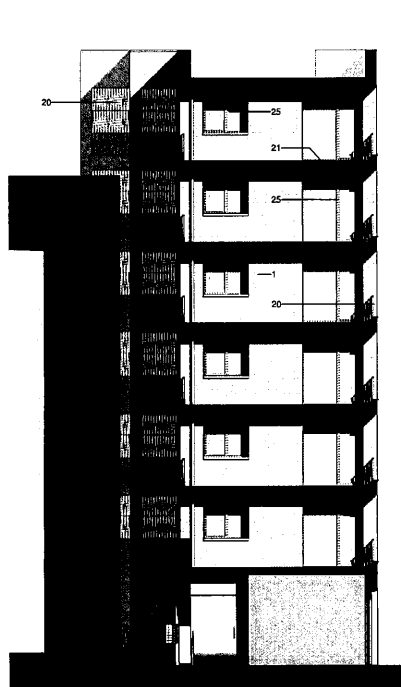
London  
Thames Building  
2 & 3 Finsbury  
London EC2A 7TA  
+44 (0)20 7515 7878

Manchester  
Springfield House  
Oxford Street  
Manchester M2 1LE  
+44 (0)161 868 8170

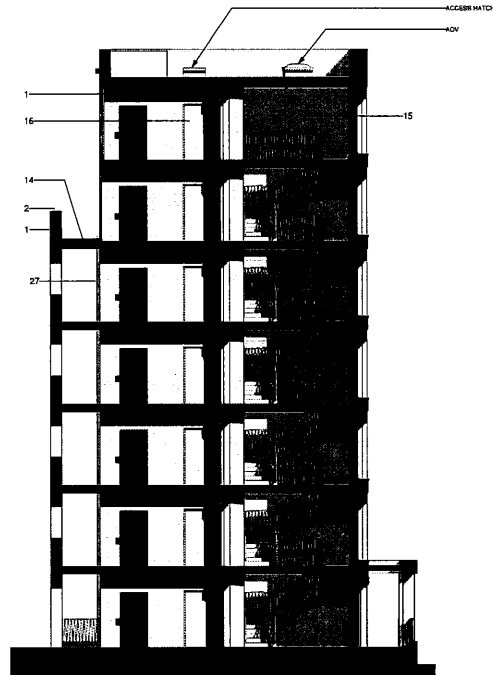


abkdublin.com

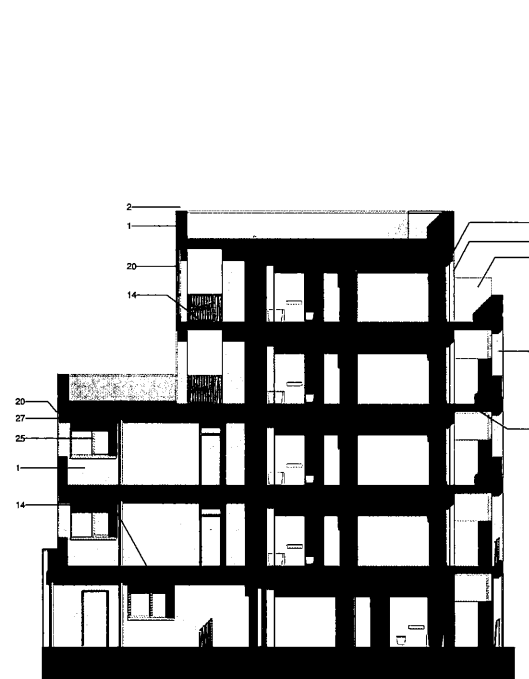
Dublin  
31 Lower Leeson Street  
Dublin 2  
+353 1 478 9922



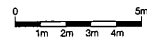
1 Block A - Walkway Elevation 1  
1 : 100



2 Block A - Walkway Elevation 2  
1 : 100



3 Block A - Walkway Elevation 3  
1 : 100



**Keynote Legend**

- 1 High quality four faced brickwork, light red with varied hues to match image (1), laid in a stretcher bond. Light coloured mortar to suit brick, weatherstruck.
- 2 Concrete coping to match light red brickwork. Maximum 75mm depth.
- 4 Recessed brick panel over opening to match light red brickwork, laid in a stretcher bond. Light coloured mortar to suit brick, weatherstruck. Minimum 50mm set back from main building face.
- 14 Pavers, to communal areas, dark tumbled pavers to match image (03), laid in a herringbone bond.
- 15 High quality brickwork, light grey/white to match image (2), laid in a stretcher bond. Mortar to match brick, flush struck.
- 16 Black Paint room - PPC Heavy duty steel doors to bike store and bicycle room, to match RAL7033 Matt.
- 20 50x100mm steel flat balustrade PPC, RAL7033 Matt, to match window frames.
- 21 Pavers, to private areas, light grey tumbled pavers to match image (04), laid in a herringbone bond.
- 24 Perforated aluminium privacy panels, RAL7033 Matt, to match window frames.
- 25 Aluminium clad window system maximum 100mm width in elevation at any point, PPC RAL7033 Matt.
- 27 PPC aluminium rainwater downpipe colour and finish to match windows, RAL7033 Matt, with hopper to match.

**Notes**

1. Do not scale this drawing.
2. All dimensions must be checked on site and any discrepancies verified with the architect.
3. Unless shown otherwise, all dimensions are to structural surfaces.
4. Drawing to be read with all other issued information. Any discrepancies to be brought to the attention of the architect.
5. This drawing is the copyright of Levitt Bernstein and may not be copied, altered or reproduced in any form, or passed to a third party without license or written consent.

All extracts from digital ordnance survey. Copyright:  
© Durbhainneach Oronais Eireann  
© Ordnance Survey Ireland  
Under licence number AR 0043118

This is not a construction drawing, it is unsuitable for the purpose of construction and must on no account be used as such.

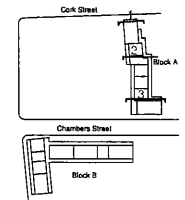


Image (01) Ashford - Frazer House  
Image (02)  
Image (03)

T8 14/10/18	FACADE AMENDMENTS	CG
T1 01/11/18	FOR TENDER	CG
Rev	Date	Description
		Initials

Project name

**Cork Street**  
Proposed Apartment Blocks

Drawing number	Rev
3519B - LB - CC - XX - DR - A - 3108	T2

Issued by

**Walkway Elevation 01**

Process of issue	Date
For Tender	10/24/18

Scale	Drawn
As indicated @ A1	CG

Client	Checked
Dublin City Council	SL

**Levitt Bernstein**  
levittbernstein.com

**LONDON**  
Trump Building  
24 The Quadrant  
London W1R 77R  
+44 (0)20 7776 7878

**DUBLIN**  
34 Lower Leeson Street  
Dublin 2  
+353 1 478 9822

**MANCHESTER**  
Broad Warehouse  
Oxford Street  
Lingfield House 40, 31C  
+44 (0)161 168 8166











**Notes**

1. Do not scale this drawing.
2. All dimensions must be checked on site and any discrepancies verified with the architect.
3. Unless shown otherwise, all dimensions are to structural surfaces.
4. Drawing to be read with all other issued information. Any discrepancies to be brought to the attention of the architect.
5. This drawing is the copyright of Levitt Bernstein and may not be copied, altered or reproduced in any form, or passed to a third party without license or written consent.

This is not a construction drawing, it is unsuitable for the purpose of construction and must on no account be used as such.



**Key**

-  Pedestrian Entrance Ramp
-  Secure Cycle Storage
-  Visitor Cycle Parking
-  Communal Raised Planters
-  Doornstep 'Play Pockets'
-  Private Amenity
-  Park Edge Boundary
-  Boundary line

Rev	Date	Description	Initials
2	14/12/18	TENDER ISSUE	AB
1	24/11/18	TENDER ISSUE - Draft	AB

Project name

**DublinCCLot2: Cork St**  
**PROJECT DESCRIPTION**

Drawing number	Rev
3519B - LB - CC - 00 - DR - L - 9201	2

Drawing

**Block A GA 1.200 @ A2**

Purpose of issue	Date
For information	14/12/18

Scale	Drawn
As indicated @ A2	AB

Client	Checked
Dublin City Council	LJ

**Levitt Bernstein**  
levittbernstein.co.uk

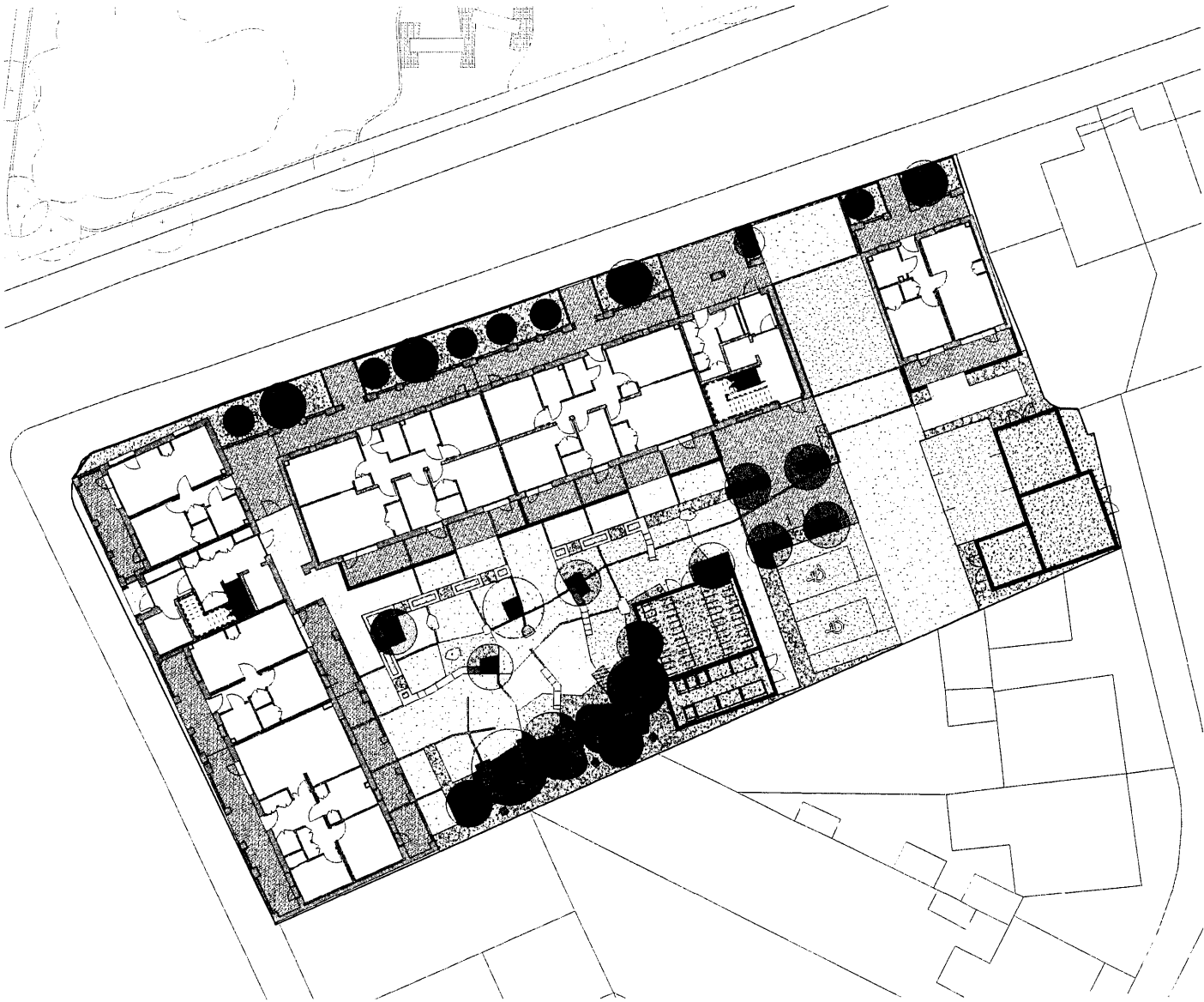
**London**  
Thane Studios  
2-4 Thane Villas  
London N7 7PA  
+44 (0)20 7275 7676

**Manchester**  
Bonded Warehouse  
Grange Street  
Manchester M3 3JE  
+44 (0)16 1669 8740



abkdublin.com

**Dublin**  
34 Lower Leeson Street  
Dublin 2  
+353 1 679 8922














**Notes**

1. Do not scale this drawing.
2. All dimensions must be checked on site and any discrepancies verified with the architect.
3. Unless shown otherwise, all dimensions are to structural surfaces.
4. Drawing to be read with all other issued information. Any discrepancies to be brought to the attention of the architect.
5. This drawing is the copyright of Levitt Bernstein and may not be copied, altered or reproduced in any form, or passed to a third party without license or written consent.

This is not a construction drawing, it is unsuitable for the purpose of construction and must on no account be used as such.



**Key**

	Planting strip abutting park		Incidental seating
	Vehicular entrance to courtyard		Benches
	Standard parking		Proposed trees
	Disabled parking		Doorstep woodland play
	Visitor cycle parking		Boundary line
	Secure cycle parking		

2	14/12/18	TENDER ISSUE	AB
1	24/10/18	TENDER ISSUE - Draft	AB
Rev	Date	Description	Initials

Project name

**DublinCCLot2: Cork St  
PROJECT DESCRIPTION**

Drawing number	Rev
----------------	-----

3519B - LB - CC - 00 - DR - L - 9202	2
--------------------------------------	---

Drawing

**Block B GA 1.200 @A2**

Purpose of issue	Date
For Information	14/12/18

Scale	Drawn
As indicated @ A2	AB

Client	Checked
Dublin City Council	LJ

**Levitt Bernstein**  
levittbernstein.co.uk



**London**  
Thane Studios  
2-4 Thane Villas  
London N17 7PA  
+44 (0)20 7275 7676

**Manchester**  
Bonded Warehouse  
Grange Street  
Manchester M3 3JE  
+44 (0)16 1668 8740

abkdublin.com

**Dublin**  
34 Lower Leeson Street  
Dublin 2  
+353 1 676 9522